

Scanner Wedge for BlackBerry™

Software Users Guide

Contents

| | |
|---|------------------|
| <u>INSTALLING SCANNER WEDGE SOFTWARE</u> | <u>2</u> |
| <u>ACTIVATING THE SCANNER CONNECTION</u> | <u>5</u> |
| <u>TRACING SCANNER OUTPUT</u> | <u>9</u> |
| <u>FORMATTING OUTPUT</u> | <u>11</u> |
| <u>SELECTING START-UP OPTIONS</u> | <u>12</u> |
| <u>TIPS AND TROUBLESHOOTING</u> | <u>13</u> |
| <u>END USER LICENSE AGREEMENT</u> | <u>15</u> |

Installing Scanner Wedge Software

Scanner Wedge is a software program that runs on your BlackBerry device, communicates with your scanner, and forwards scanned bar codes into other programs on your device. Scanner Wedge makes other programs accept scanned bar codes as if the numbers had been entered from the BlackBerry keypad.

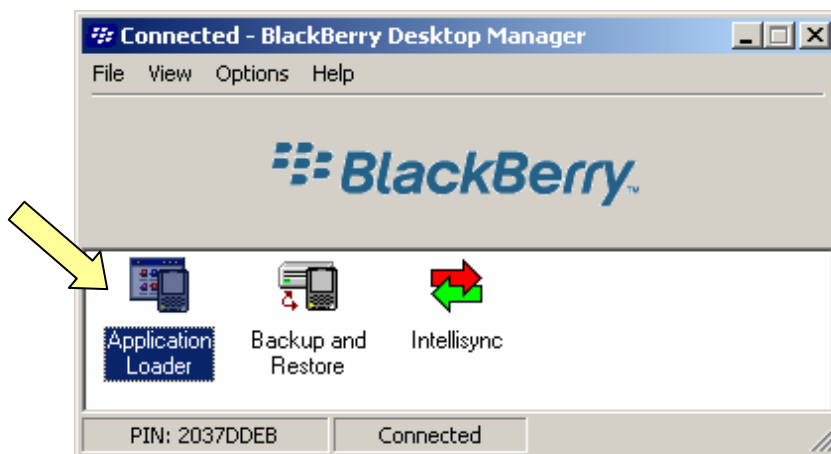
To install Scanner Wedge you will use the BlackBerry Desktop Manager and the download zip file on your PC.

Installation steps:

1. Visit <http://www.flicscanner.com/software/swbb> to locate the *ScannerWedgeBB_1.1.zip* file. Fill out the registration form and click **Submit** and download the file.
2. Unzip the *ScannerWedgeBB_1.1.zip* file and extract from it the following installation files:
 - *ScannerWedgeforBlackberry.alx*
 - *ScannerWedgeforBlackberry.cod*
 - *ScannerSDKBlackberry.cod*

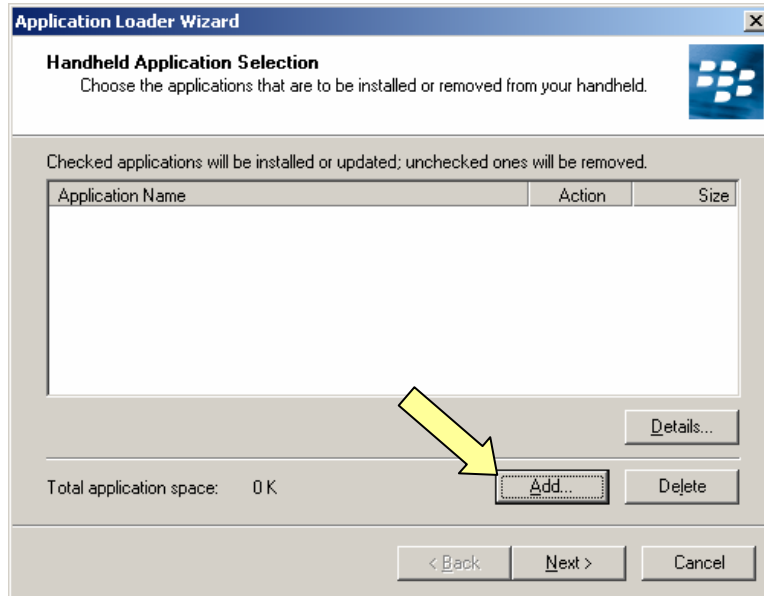
Note: *ScannerWedgeforBlackberry.alx* is the file that installs both the Scanner Wedge application itself and the *ScannerSDKBlackberry.cod*.

3. Connect the BlackBerry to the PC using a USB cable.
4. Launch the BlackBerry Desktop Manager on the PC.
5. Start the Application Loader Wizard.

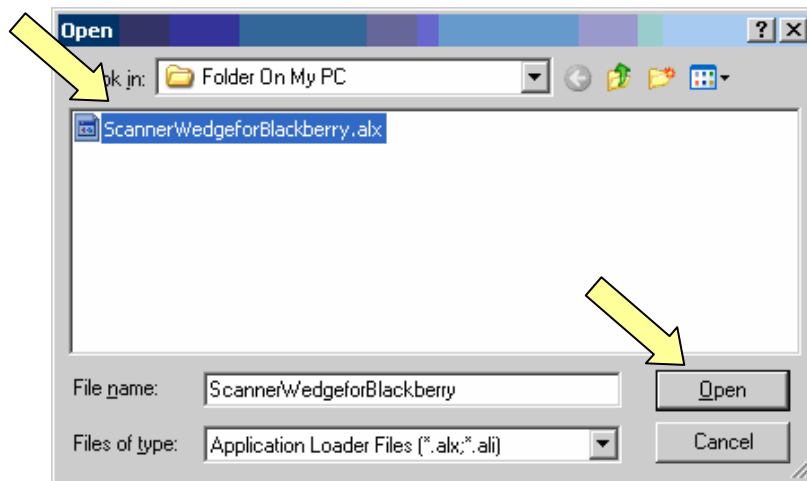


6. Click **Next**.

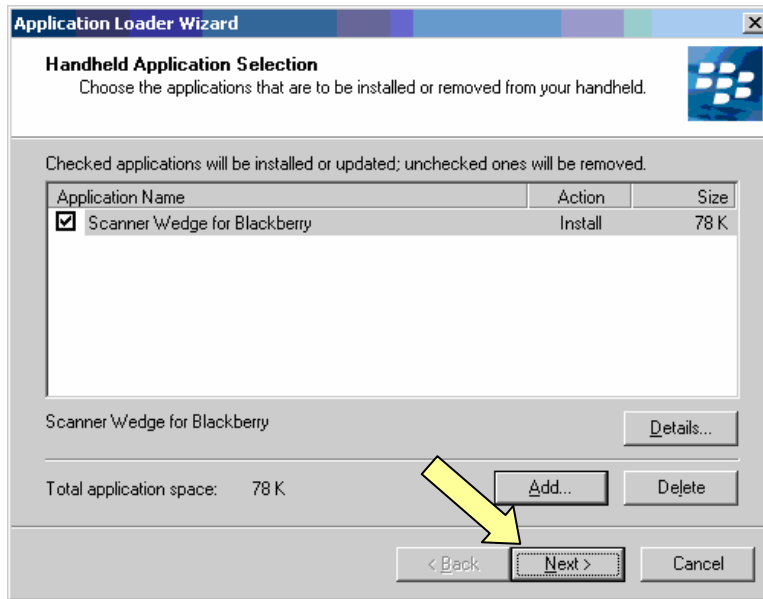
7. Click **Add** to add the first application file.



8. Navigate to the folder on the PC that contains the unzipped application files, select the ScannerWedgeforBlackberry.alx file and click **Open**.



9. With the application added and marked for installation, click **Next**.



10. Click **Finish** to complete the installation.

11. When finished, click **Close** and unplug your BlackBerry from the PC.

On your BlackBerry device click **Applications** then **Scanner Wedge** to launch the software.

Activating the Scanner Connection

This section describes how to:

1. Pair your BlackBerry with the Scanner using Bluetooth settings
2. Activate the connection in Scanner Wedge.

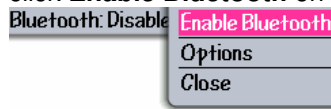
Pair the BlackBerry with the Scanner using Bluetooth Settings

1. Put the scanner into Discoverable Mode by pressing the button on the scanner.

NOTE: By pressing the button on the scanner, it will enter Discoverable mode, indicated by the green light blinking twice every two seconds. The scanner must be in discoverable mode to pair with the BlackBerry and connect to Scanner Wedge.

2. Enable Bluetooth on the BlackBerry under Bluetooth Settings.

- a) From the Bluetooth Settings screen, if Bluetooth is disabled, click the trackwheel and click **Enable Bluetooth** on the pop-up menu.



- b) Message on screen will indicate "Bluetooth: Enabled".



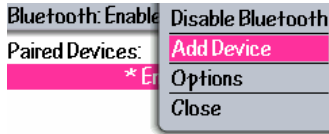
Tip: Depending on your BlackBerry model, you will find Bluetooth Settings in one of the following locations:

Tools-Settings, OR
Settings, OR
Settings-Options.

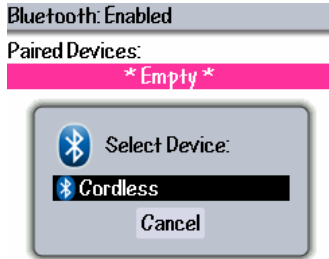
Because BlackBerries differ widely, please refer to your BlackBerry user's manual if you are having trouble activating Bluetooth.

3. Pair the scanner device named Cordless.

- a) From the Bluetooth Settings menu click **Add Device**.

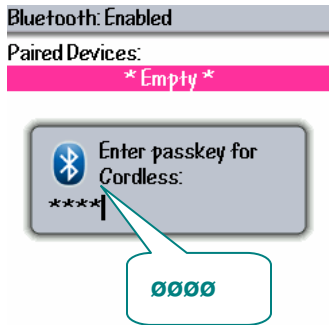


- b) The BlackBerry will find the scanner named “Cordless.” Click **Cordless**.



Tip: If the scanner is not found, make sure the scanner is in discoverable mode and try again.

- c) When prompted for a passkey, enter the default code **0000** (four zeroes) and click the trackwheel.



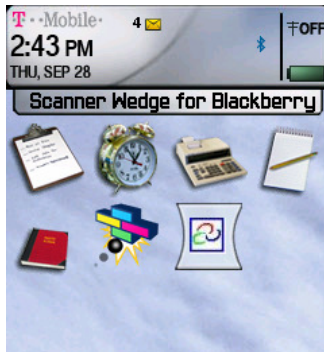
- d) The screen will display “Paired Devices: Cordless”.



Tip: If Paired Devices still displays “empty,” repeat step 3.

Activate the Connection in Scanner Wedge

1. Launch Scanner Wedge on your BlackBerry by clicking **Applications** then **Scanner Wedge**.



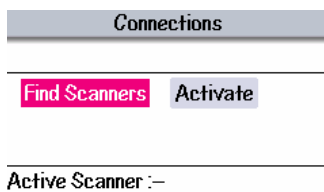
NOTE: If prompted to register the software, you may register or skip. Skipping will result in the inability to scan into any application other than the Scanner Wedge trace screen. To register:

1. Enter the key provided in the email you received when you purchased Scanner Wedge.
 2. Enter your name and company name (optional).
 3. Click the scroll wheel and select **Check Registration**.
-

2. Open the Connections screen by clicking the trackwheel, and from the pop-up menu clicking **Connections**.



3. On the Connections screen, click **Find Scanners**.



Tip: If the scanner is not found, verify the scanner is in Discoverable Mode and the Bluetooth is paired (see previous section), and try again.

4. With the desired scanner highlighted, click **Activate**. Scanner Wedge may ask for the Scanner PIN number. If it does, enter 0000 (four zeroes).



Active Scanner :-

Found 1 Scanner.

IMPORTANT NOTE: If this is the first time connecting your scanner to your BlackBerry, chances are it is not correctly configured. Scanner Wedge will offer to configure your scanner for you. If you do not correctly configure your scanner, it will **not** work with Scanner Wedge. Once configured, you may have to reactivate the scanner.

If you use the scanner for other applications not on the BlackBerry, please refer to the Tips and Troubleshooting section to learn how to reconfigure the scanner for your other applications.

Tip: If you receive an error message when attempting to activate, verify the scanner is in Discoverable Mode and click **Activate** again.

5. The Connections screen shows the messages “Active Scanner: Cordless” and “Scanner Wedge Activated. Scanner connected.”



Active Scanner :- Cordless

Scanner Wedge Activated.
Scanner connected.

NOTE: When Scanner Wedge is “Activated”, it will attempt to maintain a connection with the scanner at all times. If the scanner falls asleep, goes out of range, or disconnects for any reason, Scanner Wedge will attempt to reconnect until successful.

TIP: Click the Options tab and mark the checkbox “Activate Scanner Wedge on application start-up”. Then you will not need to repeat this section if you reset your device.

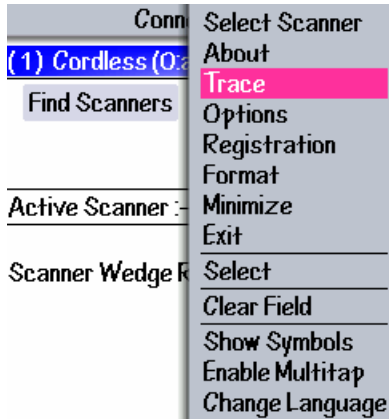
NOTE: Always **Minimize** Scanner Wedge by clicking the scroll wheel on any screen and selecting **Minimize**. Selecting **Exit** will shut down Scanner Wedge and disconnect the scanner.

You are now ready to start scanning!

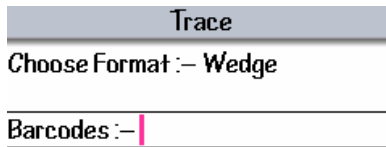
Tracing Scanner Output

Use the Trace screen to view bar code data as it is received from the scanner.

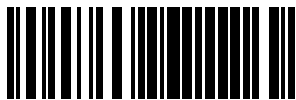
1. Open the Connections screen by tapping **Tools** then **Connections**. Make sure that Scanner Wedge is Activated and the scanner is connected (see previous section if necessary to activate the connection).
2. Open the **Trace** screen from the main Scanner Wedge menu.



Notice the Trace screen indicates the currently chosen format is “Wedge.” This means you will see the bar code data as it will be output by Scanner Wedge.

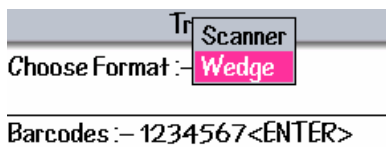


3. Print this page and scan the bar code below.



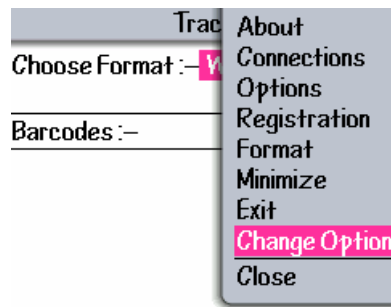
Sample bar code: 1234567

4. The bar code data will appear on the Scanner Wedge trace screen. In this example Scanner Wedge is appending <Enter> to the end of each bar code.

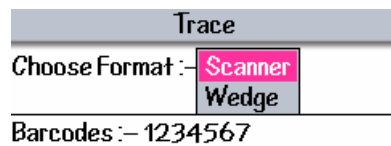


Tip: To modify Wedge formatting, click **Format** on the main Scanner Wedge menu, and change options as explained in the next section.

5. To see the raw bar code data, click **Wedge** on the Trace screen, click **Change Option**, then click **Scanner**.



Now scan the above bar code again and notice that <Enter> is not appended to the bar code.



Tip: To clear the bar code data from the Trace screen, click **Clear Field** on the menu.

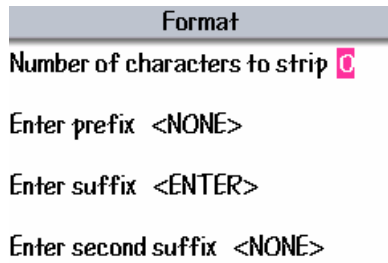
6. Open Memo Pad or another BlackBerry application, and position the cursor to accept keypad input. Scan the bar code again and watch the numbers appear in your application.

Note: You will need to register Scanner Wedge before you can scan into other applications such as Memo Pad.

Formatting Output

Scanner Wedge receives bar code data from the scanner and forwards it to other applications you might use on your BlackBerry. You can customize the format of the data received into your application using the Format screen.

1. From the main Scanner Wedge menu Click **Format**.



Format

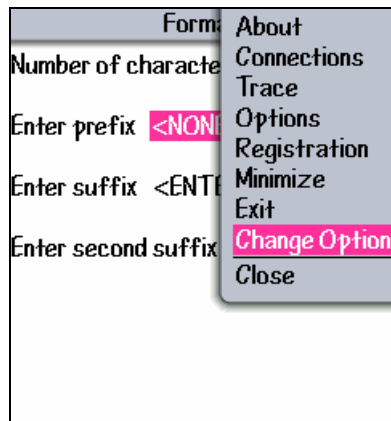
Number of characters to strip 0

Enter prefix <NONE>

Enter suffix <ENTER>

Enter second suffix <NONE>

Note: Click any format option you wish to change, then click **Change Option** to customize the scanner output.

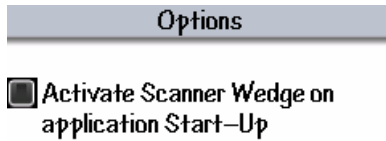


2. **Number of Characters to Strip:** This option allows you to delete zero to five characters from the beginning of the bar code. If you select 3, for example, the program strips the first three characters from the bar code before transmitting it to an application.
3. **Enter Prefix:** This option allows you to insert a character before entering a bar code. Select from **<NONE>**, **<ENTER>**, and **<SPACE>**.
4. **Enter Suffix:** This option allows you to append a character to the end of a bar code. Select from **<NONE>**, **<ENTER>**, and **<SPACE>**.
5. **Enter Second Suffix:** This option allows you to append a second character to the end of a bar code. Select from **<NONE>**, **<ENTER>**, and **<SPACE>**.
6. To test your Format selections, click **Trace** on the menu and scan some bar codes with the Wedge option chosen, as explained in the previous section.

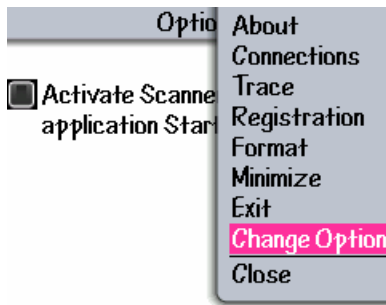
Selecting Start-up Options

On the Options screen you can specify whether you want Scanner Wedge to automatically activate whenever it launches.

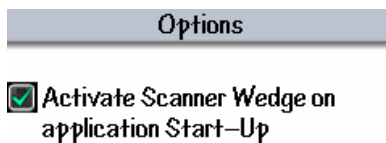
1. Click **Options** from the main Scanner Wedge menu.



2. To automatically activate Scanner Wedge when started, mark the checkbox by clicking the track wheel, selecting **Change Option**.



3. When active, Scanner Wedge will connect (if scanner is in Discoverable Mode), maintain connection, and attempt to reconnect if the scanner has disconnected.



Tips and Troubleshooting

This section contains information to help you with issues you might encounter while using your Scanner Wedge software.

Installation Issues

Issue: The software is not on my device.

Resolution: Make sure that your device is connected to your computer via BlackBerry Desktop Manager. Click **Application Loader** and click **Next** twice. You will see the “Device Application Selection”. Make sure “Scanner Wedge for BlackBerry” is listed and checked. If it is not checked, check the box and click **Next**. If it is not listed, refer to the first section in this manual – “Installing Scanner Wedge”.



Configuration Issues

Issue: You selected the option “Activate Scanner Wedge on Application startup”, but the software does not automatically connect to the scanner on startup.

Resolution: If the Connections window displays “Scanner Not Connected”, press the button on the scanner to put it in Discoverable Mode. It will auto-connect (the LED will single-blink when connected). If it does not, deactivate Scanner Wedge by clicking **DeActivate**. Click **Find Scanners**, select your desired scanner, then click **Activate**. If it still does not connect, refer to section “Activating Scanner Wedge” to pair the scanner with your BlackBerry.

Issue: My scanner no longer works properly with applications on my PC or Windows Mobile Device.

Resolution: The BlackBerry requires the scanner to be in Plus Mode. Many non-BlackBerry applications require the scanner to be in Legacy Mode. To be able to switch between modes, simply scan the bar codes below. Please note that any custom scanner settings and bar codes on the scanner will be lost when you switch modes.

| Plus Mode (required for BlackBerry) | Legacy Mode |
|---|--|
|  |  |

Connection Issues

Issue: I receive error “No Scanners Found”

Resolution: Make sure the scanner is paired with your BlackBerry. It must be paired with your BlackBerry to successfully find the scanner. Refer to the “Activating the Scanner Connection” portion of this Guide to learn how to pair the scanner with your BlackBerry.

Issue: The software does not receive any data from the scanner.

Resolution: If data is not arriving into your BlackBerry application, verify that your Scanner Wedge software is registered (refer to “Activating the Scanner Connection”). Remember that when the scan is received your chosen application needs to be open and the cursor positioned for typing on the keyboard. Check the Trace screen to make sure the codes are being received. If not, check the Connections screen for an activated scanner.

Resolution: If your scanner is connected (the LED is single blinking), but no data is entering into your trace screen or any application, security settings on your BlackBerry may be preventing you from scanning data. To learn more, please visit http://www.flicscanner.com/pdfs/Keystroke_Injection_Appnote.pdf

Resetting the Scanner

If you are experiencing issues and none of the Troubleshooting tips have helped, it is advised to reset your scanner.

- Pressing and holding its button for about 10 seconds until it has beeped twice. When you release the button it will beep again if it has reset successfully.
- Remove the batteries from the scanner. Wait 10 seconds. Install the batteries and attach the battery door.

Still having trouble?

Please contact your reseller for additional support.

END USER LICENSE AGREEMENT

FOR SOFTWARE TO BE USED WITH FLIC SCANNER PRODUCTS

IMPORTANT NOTICE TO END USERS: This End User License Agreement ("Agreement") is a legal agreement between the purchaser (either an individual person or a single legal entity who will be referred to in this Agreement as "You") of the Licensed Software (as defined below) and Microvision, Inc. ("Microvision").

BY DOWNLOADING, INSTALLING, COPYING OR OTHERWISE USING THE LICENSED SOFTWARE YOU AGREE TO BE BOUND BY THE TERMS OF THIS AGREEMENT. IF YOU DO NOT AGREE TO THE TERMS OF THIS AGREEMENT, DO NOT DOWNLOAD, INSTALL, COPY OR USE THE LICENSED SOFTWARE. IF YOU ACQUIRED THE LICENSED SOFTWARE ON TANGIBLE MEDIA (e.g. CD) WITHOUT AN OPPORTUNITY TO REVIEW THIS LICENSE AND YOU DO NOT ACCEPT THIS AGREEMENT, YOU MAY OBTAIN A REFUND OF THE AMOUNT YOU ORIGINALLY PAID FOR THE LICENSED SOFTWARE IF YOU (A) DO NOT USE THE LICENSED SOFTWARE AND (B) RETURN IT, WITH PROOF OF PAYMENT, TO THE LOCATION FROM WHICH IT WAS OBTAINED WITHIN THIRTY (30) DAYS OF THE PURCHASE DATE.

This Agreement is effective on the date You manifest your acceptance of this Agreement by downloading, installing, copying or otherwise using the Licensed Software.

IMPORTANT NOTICE TO RESELLERS AND DISTRIBUTORS: If you are an authorized reseller or distributor of Microvision Flic™ bar code scanner products, you may download the Licensed Software for distribution or resale to end user customers, provided that doing so is consistent with the terms of your existing distribution or reseller agreement with Microvision. Except as provided in the following sentence, your acceptance of the terms of this Agreement will not supercede, modify or amend the terms and conditions of your existing reseller or distributor agreement with Microvision. However, by downloading the Licensed Software and manifesting your acceptance of this Agreement, you agree that (a) you will only distribute the Licensed Software pursuant to this End User License Agreement between Microvision and the end user; (b) you will provide each of your end user customers with a copy of this End User License Agreement and ensure that such end users are on notice that their use of the Licensed Software is contingent upon their acceptance of the terms and conditions of this End User License Agreement, and (c) you will refund the purchase price of the Licensed Software to any end user customer who does not accept the terms and conditions of this End User License Agreement and returns the Licensed Software unused within thirty (30) days of their purchase date.

DEFINITIONS. In this Agreement, "Licensed Software" means the computer programs, in machine-readable, interpreted, compiled or other form, furnished to You for use with Flic™ Scanner, whether owned or licensed by Microvision, and including without limitation, (a) computer programs residing on any medium and all materials or contained in any download supplied by Microvision in connection with the Licensed Software, (b) related explanatory written materials or files ("Documentation"); and (c) upgrades, modified versions, updates, additions, and copies of the Licensed Software, if any, provided to You by Microvision, either directly or indirectly (collectively, "Updates"). The "Flic™ Scanner" means the Microvision Flic bar code scanner products that Microvision sold to You, either directly or indirectly.

LICENSE. As long as You comply with the terms of this Agreement, Microvision grants You a personal, non-exclusive, non-transferable license to use the Licensed Software (in object code form only) for your own use in the operation of the Flic™ Scanner. You may make one back up copy of the Licensed Software to support your use of the Flic™ Scanner

SUPPORT SERVICES. Microvision or the reseller or distributor from whom You purchased your Flic™ Scanner may provide You with support services related to the Licensed Software ("Support Services"). Use of Support Services is governed by the policies and programs described in the user manual, in "online" documentation, or in other materials from the support services provider. Any supplemental software code provided to You as part of the Support Services are considered part of the Licensed Software and subject to the terms and conditions of this Agreement. You acknowledge and agree that Microvision and its licensors, contractors, resellers and distributors may use technical information You provide to them as part of the Support Services for their business purposes, including for product support and development.

RESTRICTIONS. You will not use the Licensed Software in conjunction with any other equipment, system, processing units, or for any purpose other than for the operation of the Flic™ Scanner and solely for your internal business in accordance with operating instructions Microvision or its authorized resellers or distributors may provide from time to time. Unless specifically and expressly permitted by Microvision, You agree not to modify, adapt or translate the Licensed Software. You also agree not to reverse engineer, decompile, disassemble or otherwise attempt to discover the source code of the Licensed Software or to rent, lease or otherwise transfer rights to the Licensed Software.

INTELLECTUAL PROPERTY AND CONFIDENTIALITY. The Licensed Software and any copies that You are authorized by Microvision to make are the intellectual property of and are owned by Microvision and its licensors. The Licensed Software is protected by U.S. and international copyright law. Any copies that You are permitted to make pursuant to this Agreement must contain the same copyright and other proprietary notices that appear on or in the Licensed Software. Except for the limited license granted to You herein, all right, title and interest reside in Microvision and its licensors. The Licensed Software, including without limitation its structure, organization and code, and its accompanying Documentation are Microvision's or its licensors' confidential information and constitute trade secrets.

LIMITED WARRANTY. Microvision warrants that the Licensed Software will perform substantially in accordance with the accompanying materials and online documentation publicized by Microvision for a period of ninety (90) days from the date of receipt. Any supplements or updates to the Licensed Software provided to You after the expiration of the limited warranty period are not covered by any warranty or condition, express or implied. Microvision and its licensors and suppliers' entire liability and your exclusive remedy will be, at Microvision's option, (a) return of the price paid (if any) for the Licensed Software, or (b) repair or replacement of the Licensed Software that does not meet this limited warranty and that is returned to Microvision. This Limited Warranty is void if failure of the Licensed Software has resulted from accident, abuse, misapplication, abnormal use or a virus.

DISCLAIMER OF WARRANTIES. THE LIMITED WARRANTY THAT APPEARS ABOVE IS THE ONLY WARRANTY, EXPRESS OR IMPLIED, MADE TO YOU BY MICROVISION. EXCEPT FOR THE LIMITED WARRANTY STATED ABOVE, MICROVISION PROVIDES THE LICENSED SOFTWARE AND SUPPORT SERVICES TO YOU ON AN "AS IS" BASIS AND HEREBY DISCLAIMS ALL OTHER WARRANTIES AND CONDITIONS, EITHER EXPRESS, IMPLIED OR STATUTORY, INCLUDING, BUT NOT LIMITED TO, ALL WARRANTIES OF MERCHANTABILITY AND FITNESS FOR A PARTICULAR PURPOSE.

EXCLUSION OF CONSEQUENTIAL AND OTHER DAMAGES. TO THE MAXIMUM EXTENT PERMITTED BY APPLICABLE LAW, NEITHER MICROVISION NOR ITS LICENSORS WILL BE LIABLE FOR ANY SPECIAL, INCIDENTAL, INDIRECT, OR CONSEQUENTIAL DAMAGES WHATSOEVER ARISING OUT OF OR IN ANY WAY RELATED TO YOUR USE OF THE FLIC™ SCANNER, THE LICENSED SOFTWARE, THE PROVISION OF OR FAILURE TO PROVIDE SUPPORT SERVICES, OR OTHERWISE UNDER OR IN CONNECTION WITH THIS AGREEMENT EVEN IF MICROVISION OR ANY LICENSOR HAS BEEN ADVISED OF THE POSSIBILITY OF SUCH DAMAGES.

LIMITATION OF LIABILITY AND REMEDIES. THE ENTIRE LIABILITY OF MICROVISION AND ANY OF ITS LICENSORS UNDER THIS AGREEMENT AND YOUR EXCLUSIVE REMEDY (EXCEPT FOR ANY REMEDY OF REPAIR OR REPLACEMENT ELECTED BY MICROVISION WITH RESPECT TO ANY BREACH OF THE LIMITED WARRANTY) SHALL BE LIMITED TO THE GREATER OF THE AMOUNT ACTUALLY PAID BY YOU FOR THE LICENSED SOFTWARE OR U.S. \$5.00. THE FOREGOING LIMITATIONS, EXCLUSIONS AND DISCLAIMERS (INCLUDING SECTIONS 7, 8 AND 9) SHALL APPLY TO THE MAXIMUM EXTENT PERMITTED BY APPLICABLE LAW, EVEN IF ANY REMEDY FAILS ITS ESSENTIAL PURPOSE.

TERMINATION. If You breach any provision of this Agreement, then Microvision may terminate any license granted hereunder effective immediately without liability after 10 days written notice to You, and You will promptly return to Microvision all copies of the Licensed Software.

ASSIGNMENT AND FLIC™ SCANNER TRANSFER. The Licensed Software is configured for the sole purpose of operating with the Flic™ Scanner, and accordingly this Agreement shall be automatically assigned on the sale or transfer of the Flic™ Scanner with which the Licensed Software operates to the person or entity who takes title to such Flic™ Scanner, provided that such assignee or transferee abides by the obligations and restrictions set forth in this Agreement.

GOVERNMENT LICENSEE. The Flic™ Scanner, Licensed Software and the accompanying Documentation were developed solely at private expense. All rights of the U.S. government are set forth herein.

GOVERNING LAW AND VENUE. This Agreement is governed by the laws of the State of Washington, USA, excluding its choice of law rules and the United Nations Convention on Contracts for the International Sale of Goods. Venue and jurisdiction of any claim or action involving this Agreement shall exist exclusively in the state and federal courts located in King County, Washington, USA.

GENERAL PROVISIONS. This Agreement is the entire agreement between the parties with respect to the subject matter set forth herein and supersedes all prior oral written agreements between the parties with respect thereto and may only be amended in writing by the parties. If a court of competent jurisdiction finds that any provision of this Agreement is unlawful or unenforceable, then it is the intent of the parties that such court applies a rule of reasonableness and modifies the provision in question so that it will remain in effect to the greatest extent permitted by law. If a court finds such procedure to be inappropriate, then the provision held unlawful or unenforceable shall be severed from this Agreement and the remaining provisions of this Agreement shall remain in full force and effect. Sections 4, 5, 7, 8, 9, 13 and 14 (and all provisions of this Agreement which may reasonably be interpreted or construed as surviving the expiration or termination of this Agreement) shall survive the expiration or termination of this Agreement.

You acknowledge having read, understood and accepted this Agreement.

The BlackBerry and RIM families of related marks, images and symbols are the exclusive properties and trademarks or registered trademarks of Research in Motion Limited – used by permission.