

# SerialMagic Pro for BlackBerry User Guide

SerialMagic™ Pro Edition - Version 3.4.x

BlackBerry®

(SerialMagic is also available on Palm® OS, Symbian®, Windows®, & Windows Mobile®)

## Introduction

SerialMagic Pro takes serial data from a Bluetooth® port, or BlackBerry device that uses Bluetooth, and enters it directly into almost any application that runs on your BlackBerry device.



This document describes how to use SerialMagic on BlackBerry with Bluetooth.

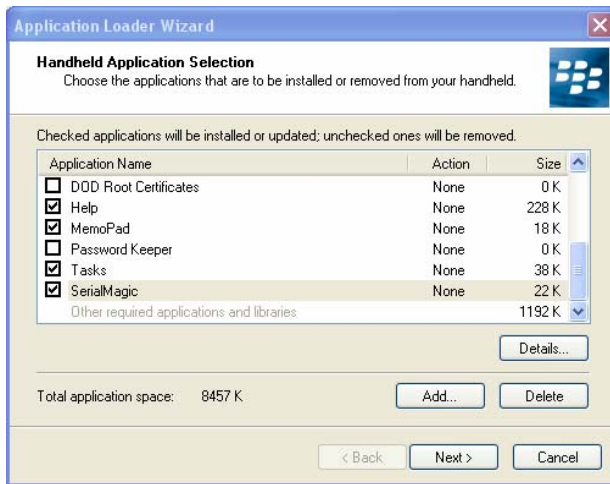
SerialMagic Pro for BlackBerry is intended for Bluetooth-enabled BlackBerry devices with Operating System version 4.0 or higher (version 4.1 or higher is recommended).

Before you buy, download, and install SerialMagic, find your BlackBerry model and software version. Make sure that your BlackBerry device version and model match your version of SerialMagic. To find your BlackBerry model and version, go to the About screen on your BlackBerry device. Because of differences in the menus on BlackBerry models, please refer to your BlackBerry documentation to learn how to find the **About** information.

| BlackBerry Version & Model            | File To Install                                       |
|---------------------------------------|-------------------------------------------------------|
| BB Ver 4.2 on 8800, 8830, 8700, 8100  | SerialMagicBlackBerryPro_3.4.4_BB_4.2_48x48_icons.zip |
| BB Ver 4.1 on 8700, 8100, 7100 Series | SerialMagicBlackBerryPro_3.4.4_BB_4.1_48x48_icons.zip |
| BB Ver 4.1 on 7250, 7520, 7290 Series | SerialMagicBlackBerryPro_3.4.4_BB_4.1_32x32_icons.zip |
| BB Ver 4.0 on 7250, 7520, 7290 Series | SerialMagicBlackBerryPro_3.4.4_BB_4.0_32x32_icons.zip |

## Installation and Registration

1. On your host computer, unpack the SerialMagic .COD and .ALX files from the SerialMagic archive that matches your BlackBerry handheld's OS version.
2. Make sure that your BlackBerry is connected to the host computer, and launch the BlackBerry Desktop Manager, and then double-click the **Application Loader** icon.
3. Click **Add** in the Application Loader Wizard dialog, browse to the location of the SerialMagic .COD & .ALX files and select them. After you select the .COD and .ALX files, click **Open**. You should then see a dialog similar to that shown below.

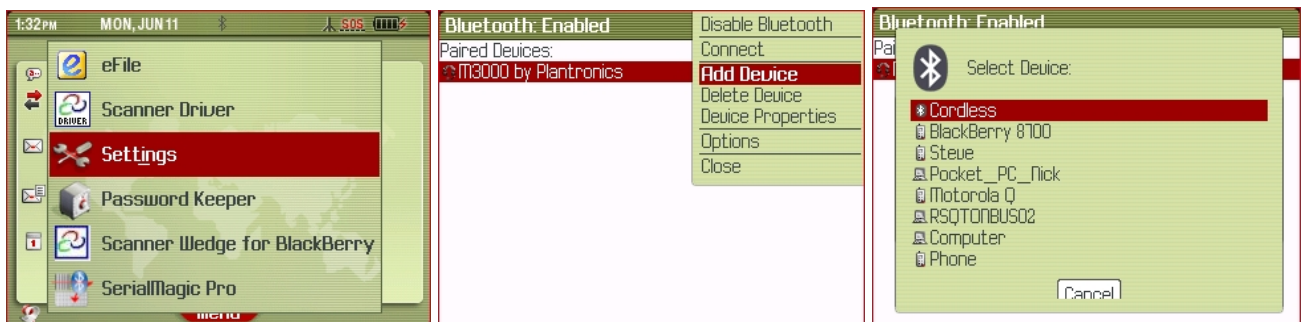


4. Click **Next**, and then click **Finish** to install the SerialMagic software on the BlackBerry.

### Pair Bluetooth Scanner and BlackBerry

Use the BlackBerry Bluetooth manager to pair the Bluetooth device to the BlackBerry. You can enable the manager by choosing the Bluetooth icon on your BlackBerry desktop.

1. If you did not already, start your BlackBerry.
2. Activate your Microvision Scanner with Bluetooth by pressing and releasing the **Scan** button. When the Microvision scanner is active, the green or blue LED double-blinks every second.
3. On your BlackBerry, click the thumbwheel, select **Settings**, and then click the thumbwheel.



4. On the **Options** screen, select **Bluetooth**, and then click the thumbwheel.
5. On the **Bluetooth Enabled** screen, click the thumbwheel, select **Add Device**, and then click the thumbwheel.

Your BlackBerry searches for devices, and then shows you list of devices it finds.

6. On the list of devices, select **Cordless**, and then click the thumbwheel.
7. In the **Enter passkey for Cordless** box, type 0000 (four zeros), and then click the thumbwheel.
8. **Cordless** appears in the list of paired devices on the **Bluetooth Enabled** screen.

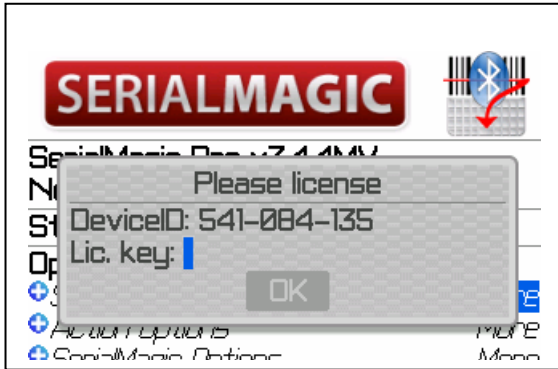
Your BlackBerry and Microvision Scanner with Bluetooth are now paired.

Note: If you see a **No new devices found. Try again?** message, then:

Make sure that SerialMagic is stopped

-and-

Make sure that your Microvision scanner is active and discoverable; the green or blue LED double-blinks once every second. If the LED does not double-blink, press the Scan button to activate your Microvision scanner.



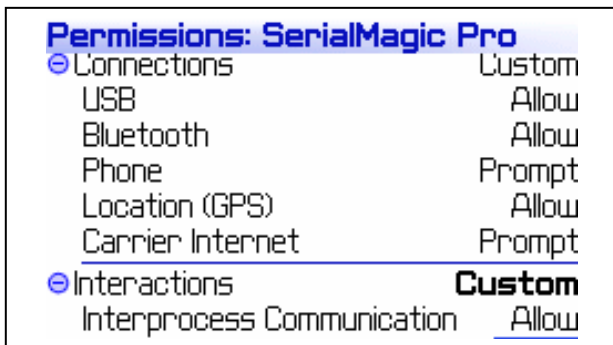
Start SerialMagic to find the hardware/Device ID shown in the registration dialog. Go to the Microvision Web site to register and obtain a License Key. Along with the Device ID you must also have a Token either emailed to you or provided on a SerialMagic Token Card. You are not required to register SerialMagic Pro. However, if you do not register, the words “UNREGISTERED SERIAL MAGIC” appear in the application in which you’re scanning in place of every third bar code you scan.

### Important BlackBerry Device Settings Note

Make sure that the Bluetooth and Keystroke Injection options are enabled before using your scanner with SerialMagic. If you do not set Keystroke Injection to Allow, then when a scan occurs you will see the following message:

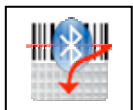
SerialMagic detected Keystroke Injection disabled. Please enable Keystroke Injection for SerialMagic or contact support.

You can verify these options by selecting Options > Advanced Options > Applications > SerialMagic Pro.



1. On the menu, click **Edit Permissions**.
2. Click **Connections** and then click **Expand**. Verify that **Bluetooth** is set to **Allow**.
3. Click **Interactions**, and then click **Expand**. Verify that **Keystroke Injection** is set to **Allow**. If you cannot select **Allow**, contact your BlackBerry supplier or your local BES administrator to get help.

### Launching and Running SerialMagic



Switch to the SerialMagic application. Start SerialMagic by clicking the thumbwheel, and select **Start**. SerialMagic is now active and

SerialMagic™ Pro for BlackBerry



©2007 Microvision, Inc., all rights reserved.

connected to your Microvision Scanner with Bluetooth. Now switch focus to the desired application. When the BlackBerry cursor is located where you want scan a bar code.

Note: The Microvision scanner LED blinks once per second to indicate an active Bluetooth connection. When the Bluetooth connection is NOT active, the LED blinks twice per second. If this occurs, make sure that the scanner has fresh batteries.

Note: When using a Microvision Scanner with Bluetooth, select **Flic 2142** from the **Device Type** drop down list.

Note: By default the Bluetooth radio in the Microvision scanner turns off after 60 seconds of inactivity. When this occurs, and a new bar code is scanned, the Bluetooth radio wakes up, and then tries to reconnect with the scanner. It may take a few seconds to complete the reconnection, so you may not see the scan appear immediately on your BlackBerry device.

## SerialMagic Menu Options

You use the SerialMagic menu to control how the program operates. The items that appear on the menu depend on the type of device you select, and whether the scanner is actively connected to your BlackBerry device and SerialMagic software. The following is an outline of the various options available.

### Common Settings

#### *Start/Stop/Activate*

Start, Stop, or Activate always appears as the first option on the menu. This lets you change the SerialMagic status. If SerialMagic is stopped, then the Start option appears. If SerialMagic is running, then the Stop option appears. Activate appears when SerialMagic is running, but is paused because of other settings.

#### *Hide Application*

While SerialMagic is running, this option switches to BlackBerry desktop while leaving SerialMagic running.

#### *Restore Program Defaults*

Use this option to reset all SerialMagic settings to the default settings from initial installation.

#### *Enable Password Protect*

Use this option to add password protection to SerialMagic. If you add password protection, all SerialMagic settings are protected by the password.

#### *Set Password*

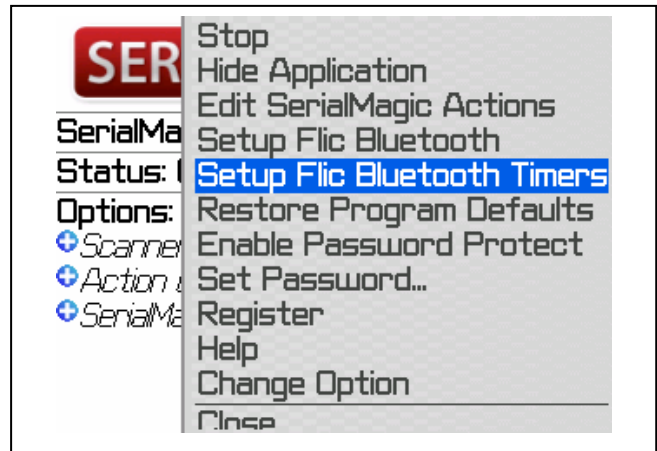
After you initially create and save a password, use this option to change the password.

#### *Help w/View Log*

The Help file contains information about SerialMagic features and functions. You can also access a diagnostic log to see diagnostic information generated when SerialMagic is running. This option should only be needed if requested by software supplier and can be sent via email.

#### *Close*

Use this option to stop SerialMagic. This is different than using Hide Application and returning to BlackBerry desktop.



## Microvision Only Options

### *Set up Microvision*

You use this feature to configure your Microvision scanner. You can configure Microvision scanners that use a single operating mode or multiple operating modes. For Microvision scanners that use multiple operating modes, you can use this option to switch between these operating modes.

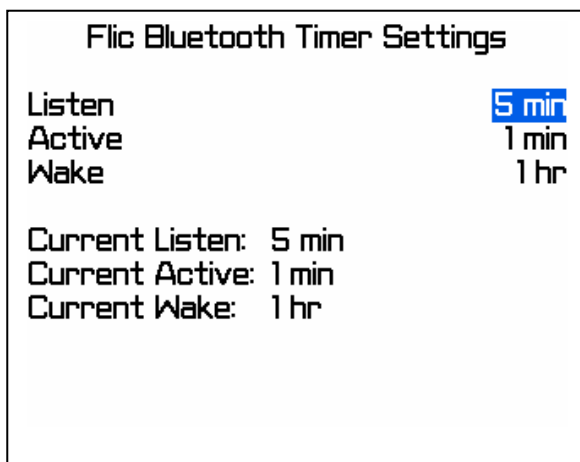
Note: You can use this option only when your BlackBerry device is started, SerialMagic is active, and the scanner is connected to the BlackBerry device.

### Set up Microvision Timers

This feature lets you to set the internal timers in your Microvision scanner. You access this option by clicking the thumbwheel on your BlackBerry device. You can access these options only when you meet the following conditions:

- The selected scanner is a Microvision scanner.
- SerialMagic is running.
- Your Microvision scanner is actively connected to your BlackBerry device.
- For multiple-mode scanners, the scanner is in Plus or Basic mode, and is NOT in Legacy mode.

The timers you can set include:



**Listen:** Amount of time a Microvision scanner looks for a connection to your BlackBerry when it wakes up (click of the scanner button).

**Active:** Amount of time a Microvision scanner stays on when inactive. After this period of inactivity elapses, your scanner will automatically sleep (go inactive). LED stops blinking.

**Wake:** Amount of time before your Microvision scanner wakes up to connect to your BlackBerry if scans are in memory. If there are scans in memory, and they are not sent to your device, your scanner will go to sleep and wake up periodically and try to connect so it can download the bar codes.

## SerialMagic Scanner Options

### *Device Type*

This build of SerialMagic Pro is expressly for the Microvision Scanner with Bluetooth.

### *Paired devices*

This displays the Bluetooth address of the last device to which SerialMagic was connected. If your BlackBerry is paired with multiple scanners, then you can select the paired scanner you want. To see a list of paired devices, click the thumbwheel, and then click **Change Option**.

### *Plus Mode (Microvision **Flic**™ Only)*

This feature is specific to Microvision Flic bar code scanners, delivered after Aug 01, 2006 and before Aug 01, 2007. You can use this feature to extend the power saving capabilities on the scanner. These settings are found in the EnduraScan™ settings. The scanner must be in Plus mode ([Appendix A](#)) to use this option.

### *Stealth Mode*

You can use this option only when Host Scan Control is enabled. When Stealth Mode is enabled, the scanner beep is muted when bar codes are sent to your BlackBerry.

### *TruePair® Security Paired Locking with **Flic** Bluetooth Scanners*

Select TruePair Security Lock to prevent your Microvision scanner from breaking the pairing with the SerialMagic host device. Select this option when Bluetooth Access Points that support the Bluetooth SerialPort Profile (Spp) are available.

Some Bluetooth Access Points can be configured to auto-connect with Microvision bar code scanners. If you use auto-connect, the scanner's current pairing may be broken, which means you must manually pair the scanner and BlackBerry device again.

Select TruePair Security Unlock break the pairing between your Microvision scanner and BlackBerry device. When you unlock a scanner, make sure that you use the same computer that you used to lock the scanner.



## SerialMagic Action Options

A **SerialMagic Action Profile (SMAP)** gives you extended functionality for your scanner by allowing SerialMagic to perform extra actions when it sends bar code data into your target application. SMAPs include a number of **SerialMagic Actions** that are performed each time bar code data is received from the scanner.

### Global Profile

Use this option to view the SMAP that is designated as **Global**. The Global SMAP always runs first, and precedes the Active Profile. You can use the Global profile and SET-ACTIVE-SMAP to change which profile is used without leaving your application or returning to SerialMagic Pro.

### Profile

This option displays the active SMAP for SerialMagic. To create a new SMAP or edit an existing SMAP, click the thumbwheel, and then select **Edit SerialMagic Actions**.

### Clip start

The clip options let SerialMagic remove a number of characters you specify from the beginning, or end, of the bar code data before the data is inserted into your application. **Clip start** defines the number of characters to remove from the beginning of the bar code data packet.

### Clip end

The clip options let SerialMagic remove a number of characters you specify from the beginning, or end, of the bar code data before the data is inserted into your application. **Clip end** defines the number of characters to remove from the end of the bar code data packet.

### ISBN Conversion

Converts Bookland EAN-13 code to a 10-digit ISBN number.

Note: The scanner must be in AIM mode in order to use this option. If using a Microvision scanner, scan the following configuration bar codes:

#### ROV Bar Codes



Symbology Identifier Type is AIM



Decode Supplemental Bar Codes is False

#### Flic Bar Codes



AIM Identifiers Enable



Disable Supplemental Codes



## SerialMagic Actions (Profile Editor)

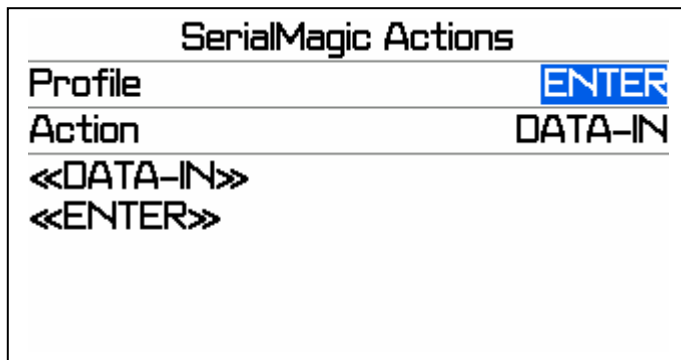
You use the SerialMagic Actions Profile Editor to create and edit a profile. There are a number of standard, pre-defined SMAPs included with SerialMagic Pro. These pre-defined SMAPs cannot be overwritten or deleted. They include:

**ENTER:** Enters a scan and then sends an <ENTER>. This is the standard action to perform with scanned bar code data.

**SPACE:** Enters a scan then sends a <SPACE>.

**COMMA:** Enters a scan then sends a comma separator (,)

**PROMPT\_NUM:** This profile prompts you for additional input while scanning. This profile is useful for inventorying applications where the item scanned must be preceded by a quantity. This profile prompts for a quantity after each scan, and puts both the entry and the bar code data in a packet separated by a TAB. This is very useful with spreadsheet applications.



### SerialMagic Action(s)

Please see [Appendix B](#) for a full description of available SerialMagic Actions (SMA).

### SMA Profile Editor Menu

#### Insert Action

When the cursor is in the SMAP area of the display, this option adds the selected action

before the SMA the cursor is on. If the cursor is not in the SMAP area, the action is inserted at the beginning of the SMAP.

#### Append Action

When the cursor is in the SMAP area of the display, this option adds the selected action after the SMA the cursor is on. If the cursor is not in the SMAP area, the action will be appended to the end of the SMAP.

#### Delete Action

When the cursor is in the SMAP area of the display, this option deletes the action the cursor is on.

#### Set Active Profile

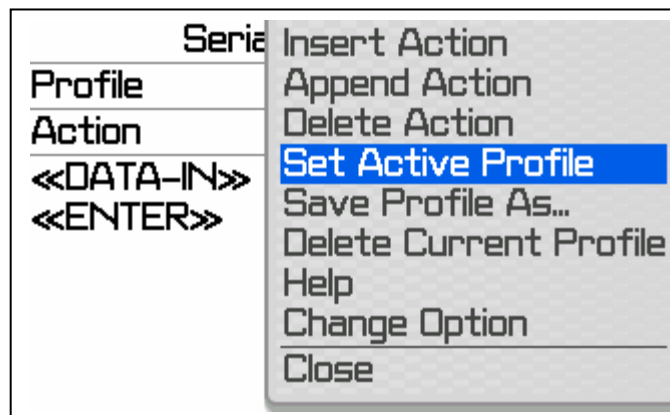
This option sets the current SMAP to be used the next time SerialMagic processes a scan.

#### Save Profile As...

This option lets you save the current SMAP. Note: built-in profiles cannot be overwritten.

#### Delete Current Profile

This option lets you delete the selected SMAP. Note: built-in profiles cannot be deleted.

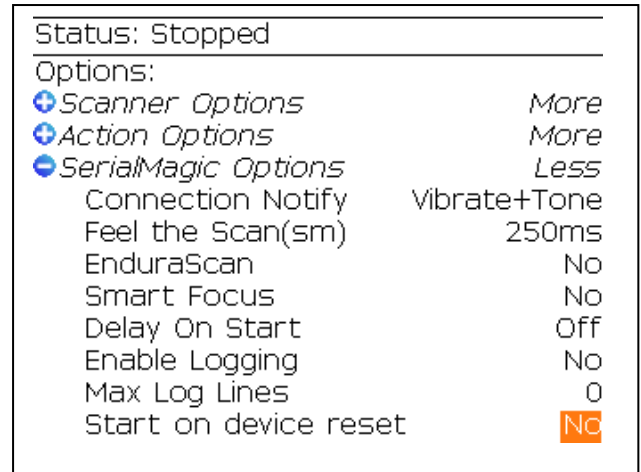


## SerialMagic Options

### Connection Notify

This option lets you to enable the BlackBerry to notify you when your Bluetooth scanner connects or disconnects. When this feature is enabled, you can receive the following notification types from your BlackBerry device:

- **Vibrate:** The BlackBerry vibrates briefly when the scanner connects or disconnects
- **Tone:** The unit plays an ascending beep tone when it connects and a descending beep tone when it disconnects.
- **Vibrate+Tone:** The device vibrates and beeps.



This feature gives you feedback about the status of your Bluetooth connection to your scanner without viewing SerialMagic’s main screen.

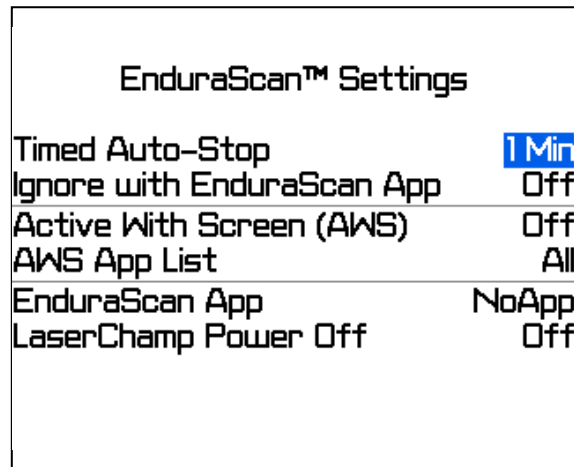
### Feel the Scan(sm)

Use this feature so that your BlackBerry vibrates every time a scan is processed. The scanner continues to beep, but the beep is accompanied by a vibration. The setting for this feature defines the duration of the time the BlackBerry to vibrate (0.1 sec to 1 sec).

### EnduraScan™

EnduraScan technology gives you enhanced battery life when using the BlackBerry with Bluetooth bar code and scanners. EnduraScan enhances battery life by using advanced power management features. When this option is enabled, the EnduraScan Settings screen appears.

Note: If you need to view/modify these options after enabling, press the **Space** button on the BlackBerry keypad, or highlight the option, click the thumbwheel, and then select **Change Settings**.



| EnduraScan™ Settings       |       |
|----------------------------|-------|
| Timed Auto-Stop            | 1 Min |
| Ignore with EnduraScan App | Off   |
| Active With Screen (AWS)   | Off   |
| AWS App List               | All   |
| EnduraScan App             | NoApp |

*Timed Auto-Stop:*

This option lets you set SerialMagic to automatically suspend Bluetooth communication after a specified time period of inactivity.

*Ignore with EnduraScan App*

This option disables Timed Auto-Stop feature when the EnduraScan Application that is named is the active application on the BlackBerry. This is helpful when you want to scan a particular application (e.g. Browser) even when the BlackBerry screen is

blank, and still have EnduraScan functional when other applications are active.

*Active With Screen (AWS)*

Activate AWS to increase BlackBerry battery duration by suspending Bluetooth connection with scanner after no scans have occurred within the Timed Auto-Stop period. Typically the BlackBerry's screen goes black to save power (often faster than Timed Auto-Stop setting). AWS will reconnect to the Bluetooth scanner when the BlackBerry screen goes active again with a keystroke, thumbwheel or other event.

*AWS App List (works in conjunction with Active With Screen)*

This feature gives you the ability to have AWS inactive when some applications are active. For example, if you want scanning disabled when using Email, but want it enabled when using your Browser, you must enable the Browser application in the AWS application list.

*EnduraScan™ Application*

Use this application in combination with the following Timed Auto-Stop setting. See [Appendix C](#) for instructions and control codes needed to add/delete applications to choose from.

*Flic Power off (Flic scanners only)*

You can use this feature when the Plus Mode option is enabled in the Scanner Options. When enabled, EnduraScan will also turn off the scanner to conserve power on the scanner as well as the BlackBerry.

*Smart Focus*

When this option is enabled, SerialMagic responds to scans by making the specified application active before delivering the scan. When you enable this option, you are directed to the Settings screen to select the application.

Note: If you need to view or modify these options after enabling, click the thumbwheel, and then select **Change Settings**.

*Focus Application:* Allows you to select an application to always receive focus for your scans. See [Appendix C](#) for instructions and control codes needed to add/delete applications.

*Delay on Start*

This option pauses SerialMagic for a period of time you specify when SerialMagic starts. This feature helps when connecting to a scanner that has scans stored in scanner memory (batched). This setting allows SerialMagic to start and then gives you time to select your application on your BlackBerry before processing any scans.

*Enable Logging*

Starts the local software logging application that is monitoring SerialMagic events. This option should normally be set to OFF and enabled only if requested by your software supplier.

*Max log lines*

When logging is enabled, this option defines the maximum number of lines you can have in your log file.

*Start on device reset*

This option controls whether SerialMagic Pro automatically starts when the BlackBerry device resets. If enabled and the BlackBerry resets, SerialMagic automatically starts and runs in the background.

Flic™ is a trademark of Microvision, Inc. BlackBerry® is a registered trademark of Research in Motion, Ltd. Windows® and Windows Mobile® are registered trademarks of Microsoft, Inc. Symbian® is a registered trademark of Symbian Software Limited. Palm® is a registered trademark of Palm, Inc. Bluetooth® is a registered trademark of Bluetooth SIG. EnduraScan™, GridMagic™ and SerialMagic™ are trademarks of Serialio.com.

## Appendix A

Microvision Flic scanners use multiple modes of operation. SerialMagic Pro can communicate with the scanner in these different modes. The different modes of operation that are compatible with SerialMagic Pro are LEGACY, BASIC, PLUS NORMAL, PLUS BATCH and PLUS HOST CONTROL mode.

Although Legacy mode is capable of performing all bar code scanning functions for your scanner, the Plus modes (including Basic) provides for additional power saving capabilities not supported by Legacy mode.

Basic mode is a Plus Command mode functionality and can be configured via SerialMagic. In addition, Basic mode can be configured by control bar codes on the succeeding page. As Basic mode is a “Plus Command Mode” function, it therefore requires that you scan BOTH the “Switch to Plus” mode bar code AND “Switch to Basic” mode bar code.

### *Plus Mode - Host Scan Control*

This feature is specific to Flic branded bar code scanners, delivered after Aug 01, 2006 and before Aug 1, 2007. Host Scan Control is designed to ensure delivery and confirmation of a single scan at a time. When enabling the Host Scan Control feature, the scanner is designed to only read a single bar code at a time and will beep to confirm the scan only AFTER your BlackBerry has received the data. If another attempt is made to read a scan before the prior scan has been received and acknowledged (by the multi-tone beep), the scanner will respond with a “buzz” beep to indicate the scan was rejected. IMPORTANT NOTE: This feature requires that the scanner be configured to support PLUS-mode PLUS-protocol communications along with enabling the Host Scan Control feature. Please refer to the accompanying Microvision Control Bar Codes sheet to configure the scanner appropriately.

## Essential Mode Switching Bar Codes

These control bar codes are valid ONLY to Microvision Flic scanners running firmware version x.36.xx. These scanners would have been purchased after August 01, 2006.

### Switch to Legacy Mode



### Switch to Plus Mode



Switch to Basic Mode  
(Compatibility, Ignore extensions)  
Must first scan "Switch to Plus Mode" above



Note: Bar codes can only be read from opposite modes. Ex. Switch to Legacy bar code can only be scanned if scanner is in PLUS mode. And vice-versa...

## Appendix B

### SerialMagic Actions (SMAs)

SMAs (SerialMagic Actions) are optional actions that can be performed based on the data received by SerialMagic. For example, after scanning in data, SerialMagic Actions can be set to automatically scroll the thumbwheel and lookup data.

For Actions to work, the input data must include a Carriage Return (CR) marker to identify the end of the data packet.

**Important:** In SerialMagic Pro the SMA “Serial data in” must be selected in order to get data into the target application.

#### DATA-IN

This is required to get the data into the application.

#### NEWSCAN

After the first scan, NEWSCAN prompts for an additional bar code to be scanned. This can help in taking multiple scans to complete a single entry (such as shipping information or inventory).

#### GET-ALL-SCANS

This action is used specifically for Microvision scanners. This action lets a single action profile to request the download of all scans stored in scanner memory. You can enter a string of characters, and that string can be placed between each scan. For example: <<GET-ALL-SCANS ,>> downloads all bar codes from scanner memory and puts a comma “,” (comma) between each bar code.

#### ENTER

Send <Enter> character.

#### TEXT

This allows you to enter specified text. When inserting this action, the initial action will insert a simple “” in the editor. At this point, any text that is entered between the “” will be sent.

#### PROMPT

Pause action profile to display a message and await a button press (thumbwheel) to continue. Default is “Press OK to continue.”

#### PROMPT-NUM

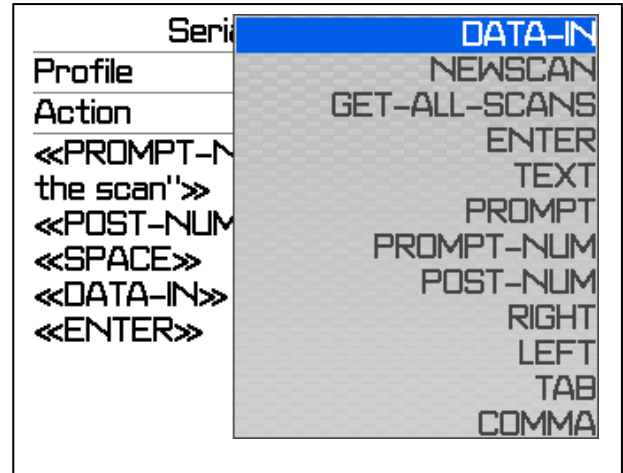
Pause action profile to display a message and await the entry of a number and button press to continue. Used in conjunction with POST-NUM to place this entry alongside bar code data.

#### POST-NUM

Inserts number inputted from PROMPT-NUM.

#### RIGHT

Move right one character.  
SerialMagic™ Pro for BlackBerry



*LEFT*

Move left one character

*TAB*

Send <Tab> character.

*COMMA*

Sends <,> character.

*SHIFT-RIGHT*

Send <Shift><Right>.

*SHIFT-LEFT*

Send <Shift><Left>.

*SPACE*

Send <Space> character.

*TWHEEL-UP*

Send a <Thumbwheel> press with one roll <Up>.

*ALT-TWHEEL-UP*

Send a <Alt><Thumbwheel> press with one roll <Up>.

*TWHEEL-DOWN*

Send a <Thumbwheel> press with one roll <Down>.

*ALT-TWHEEL-DOWN*

Send an <Alt><Thumbwheel> press with one roll <Down>.

*TWHEEL-CLICK*

Send a <Thumbwheel> press and release.

*BUTTON-ESCAPE*

Send a <Cancel> button (usually located below Thumbwheel).

*DELAY*

Inserts a timed delay or pause. When you use this option, you select the number of seconds for the delay. Range is 0.10 sec to 10 secs.

Note: To change the entry, you will need to use the <Space> key on keyboard to cycle through available options.

*IF*

This action lets you evaluate some criteria. If the condition is true, then all actions following IF are executed. If not true, then the specified ELSE actions are executed. Conditions that can be evaluated include data matching of all data or a portion of the data (starting at beginning or at some place in the middle of the data.) All conditions and actions for IF are defined between the “<<” and “>>”.

*ELSE*

See IF. Note that the ELSE statement occurs after the IF condition is evaluated false and must be before the ending “>>” of the IF statement.

### *EXIT*

Terminate the action profile immediately. Any other actions following an EXIT will not be run.

### *SET-ACTIVE-SMAP:*

This action allows a running action profile to change the ACTIVE profile. This action is usually placed in the Global Profile, so the profile runs based on the criteria in the Global Profile.

### *Event Actions*

Event actions are used for integration with GridMagic™ spreadsheet (version 3.1.0.121 or later). Events are also accessible by programming an application on the BlackBerry capable of seeing/responding to these events. Please refer SerialMagic API Programming document available at <http://www.serialio.com>.

### *EVENT-SCAN*

Event-based entry bar code posting. This event posts data AND puts an <Enter>.

### *EVENT-QTY*

Event-based enter quantity prompt and posting of inputted value.

### *EVENT-TAB*

Event-based keystroke entry of a <Tab> character.

### *EVENT-LEFT*

Event-based keystroke entry of a <LEFT ARROW>.

### *EVENT-UP*

Event-based keystroke entry of a <UP ARROW>.

### *EVENT-DOWN*

Event-based keystroke entry of a <DOWN ARROW>.

### *EVENT-NEW-ROW*

Event-based goto a new row.

### *EVENT-FIRST-BLANK-ROW*

Event-based find next available blank (empty) row and moves there.

### *EVENT-FIND*

Event-based find in GridMagic of data that was scanned. Success/failure of the find is stored in identifier FOUND. Therefore and Event-Find should be followed by an IF FOUND, so as to run the appropriate actions based on whether the FIND was successful or not.

### *EVENT-TEXT*

Event-based prompt feature. Event-Text sends a prompt, with text provided after the action, and waits for input. After input, and selecting OK, the information inputted will be posted.

## Appendix C

# Control codes for Adding/Deleting applications for EnduraScan™ and Smart Focus

The following bar codes are required to add/delete applications for use within the EnduraScan and/or Smart Focus features of SerialMagic Pro. To add an application to the list of available applications for these features, SerialMagic must be configured and Started. Navigate to the application on your BlackBerry. Once this application is on screen, scan the first bar code to add this application to your list. To enable this application in either EnduraScan or Smart Focus, simply return to SerialMagic Pro and change the appropriate option.

To delete an application from the list, you will need to navigate to this application and scan the second bar code. This will permanently remove this application from the list of those available.



Scan above code to ADD the currently focused application on the BlackBerry as an available application for EnduraScan or Smart Focus.



Scan above code to REMOVE the currently focused application on the BlackBerry as an available application for EnduraScan or Smart Focus.