

# Automotive Displays

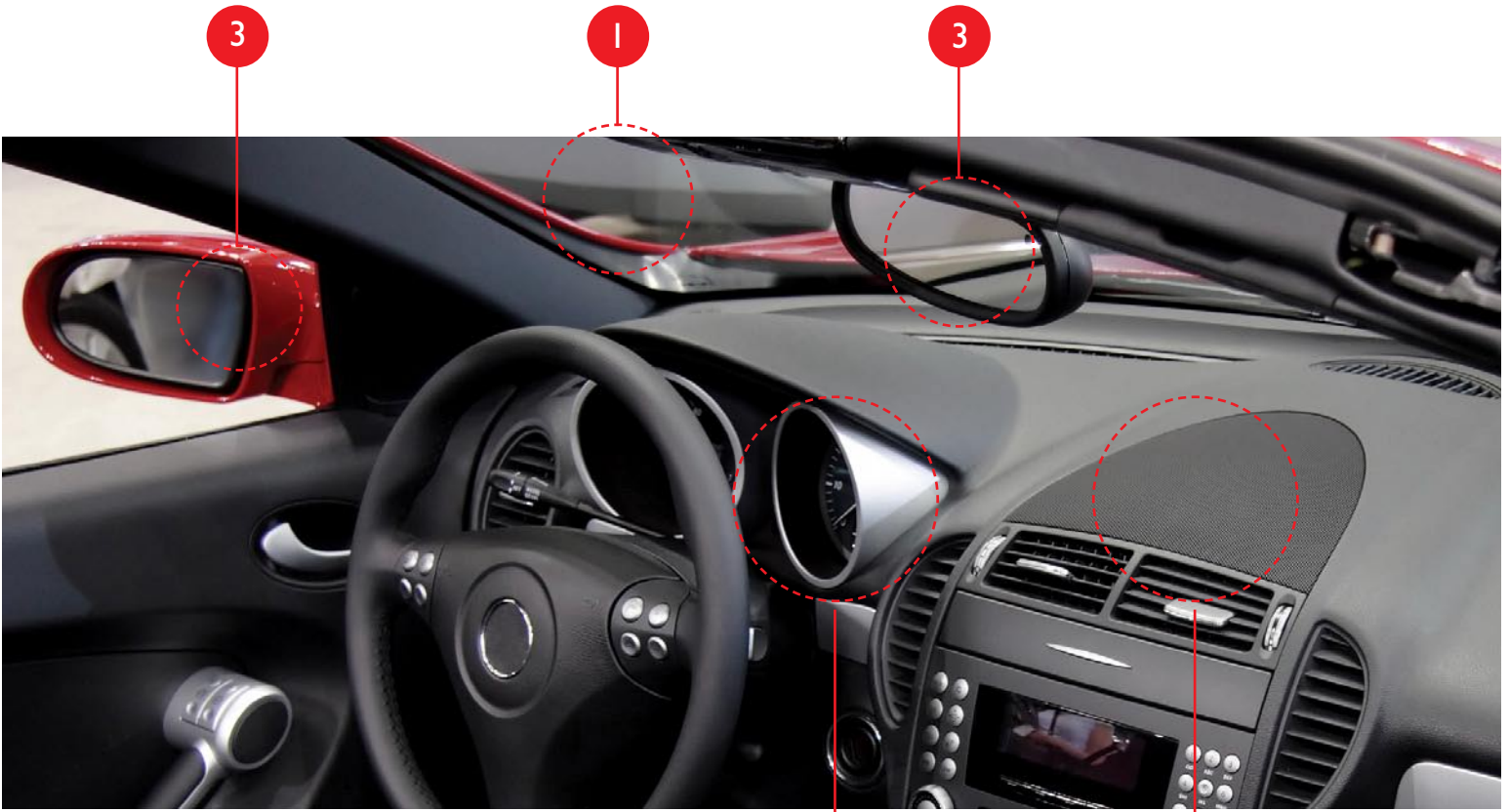
POWERED BY IPM™



## Eliminate Driver Distraction with Next-Generation Display Technology

Complete Situational Awareness is critical when driving an automobile. To maximize safety, the driver must have instant access to important vehicle information without compromising attentiveness to road conditions.

With the Integrated Photonics Module (IPM), Microvision is working with business partners to develop vehicle displays for active safety systems and infotainment that reduce driver distraction.



**1** **MicroHUD™ Display**  
Keep drivers focused on the road.

**2** **Instrument Cluster Display**  
Provide information anywhere.

**3** **Rear/Side Mirror Displays**  
Illuminate blind spots.

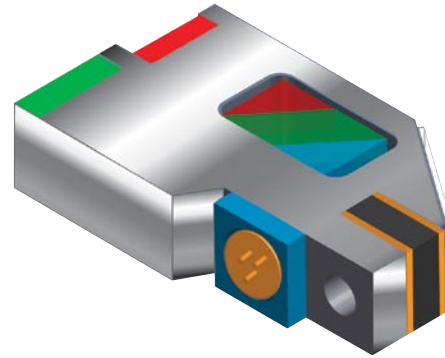
**4** **Gauge Cluster**  
Reconfigure displays to suit driving environment.

# Integrated Photonics Module (IPM)


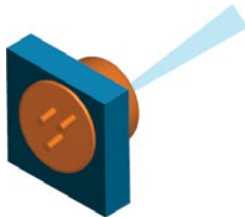


## AUTOMOTIVE GRADE DESIGN

Microvision provides reference designs for multiple automotive display applications that leverage MEMS-based IPM technology. Other IPM components include Laser Light, Optics and Electronics. These components are brought to life using Microvision's proprietary software and expertise. Manufacturers will use the IPM reference designs to develop and bring to market next-generation automotive displays that increase driver situational awareness and safety in, and around, the vehicle.

IPM is a miniature laser projection engine that provides automotive display manufacturers the power to create displays that boast exceptional image contrast, intense brightness, high-resolution and excellent dynamic color range.



### IPM Technology

	<b>MEMS</b>	<b>LASER LIGHT</b>	<b>OPTICS</b>	<b>ELECTRONICS</b>
	 <p>Bi-axial MEMS scanner incorporates a miniature mirror to render images pixel by pixel.</p>	 <p>Spectrally pure light delivers brilliant colors using tiny red, green and blue lasers.</p>	 <p>Tiny optics combine red, green and blue laser beams into a single focused beam.</p>	 <p>Integrated electronics control the MEMS scanner, modulate the laser light, and handle the video source connection.</p>
<b>Benefit to OEM</b>	Low manufacturing cost and power requirements.	Increased color gamut and dynamic range.	Reduced size, weight, and manufacturing cost.	Reduce complexity due to ASIC design.
<b>Benefit to CONSUMER</b>	Enables a small, flexible automotive display that can fit virtually anywhere in a car.	Vivid and intense colors that are fully daylight readable.	Ability to present critical data anywhere the driver needs it.	Ability to render <u>any</u> information critical to the driver.



**MICROVISION™**

**BECOME A MICROVISION DEVELOPMENT PARTNER**

If your company is serious about increasing driver situational awareness with automotive displays powered by Microvision's Integrated Photonics Module (IPM), please contact us.

Jacques\_Lincoln@microvision.com

**ABOUT MICROVISION**

Microvision, Inc. (NASDAQ: MVIS) is the world leader in the development of high-resolution displays and imaging systems based on the company's proprietary silicon micro-mirror technology. The company's technology enables solutions and products in a broad range of industrial, consumer, military and medical applications.