

Introduction

Thank you for your purchase of a **Flic™ USB Adapter Cable**. There are two styles of adapter cables, one cable adapts the serial cable provided with the Flic scanner for use with the USB port and the other is a coiled cable connecting the USB port directly to the Flic scanner. This guide provides installation instructions for both cables as well as the required Windows® driver.

The driver, answers to frequently asked questions (FAQ), and information about other accessories for Flic can be found on our website at www.flicscanner.com.



FIGURE 1

Features

- » Smart USB to RS-232 (DB-9 pin male) or coiled cable with stereo plug interface
- » Easy Plug and Play Installation
- » Full Compliance with the USB Specification v1.1
- » Supports the standard RS-232 Serial Interface
- » No IRQ resource required
- » Bus Powered – no separate power supply or battery required

System Requirements

- » Windows 98, Windows ME, Windows 2000, or Windows XP operating system
- » AMD or Intel Pentium 133MHz or better
- » USB 1.1 or higher port
- » USB to RS-232 (Serial Port) Cable Adapter or USB to stereo plug adapter
- » USB to RS-232 Driver

Installing the Device

This section will guide you through the installation of the Flic USB Adapter with Windows XP, Windows 2000, Windows ME and Windows 98 operating systems.

1. Power on your computer and boot to Windows.
 2. Download the driver for your operating system from www.flicscanner.com. The drivers are also included with the Flicware and Flicware Pro CD.
 3. Locate the USB port of your computer and plug in the USB to Serial adapter.
- Note:** Unplug the Flic scanner from the adapter cable then connect the adapter cable to the USB port. The scanner can be reconnected after the driver is configured.
4. Windows will detect the new device and initiate the **Found New Hardware Wizard** prompting you to install the software for the detected USB device. Select **Install from a list or specific location (Advanced)**.
 Click **Next** to continue.
 5. When prompted for the driver location check **Include this location in the search**, click **Browse** and refer to the folder where the driver was downloaded or the Flicware or Flicware Pro CD (see figure 2). Ensure the path selected is appropriate for your Windows operating system.
 Click **Next** to continue.

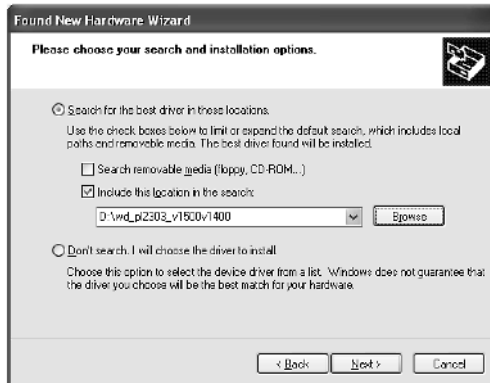


FIGURE 2

6. Windows will detect the **Prolific USB-to-Serial Comm Port** driver. A message indicating this device driver has not yet passed Windows XP Logo compatibility may appear.
 Click **Continue Anyway**.
7. Windows will then install the driver for the USB- to-Serial Comm Port. Upon completion of the installation Windows will prompt that the installation is finished.
 Click **Finish** to continue.

Verifying the Installation

This section provides a method to determine that the Flic USB Adapter was properly installed and the COM port assigned by Windows for the adapter.

1. From the Windows task bar click **Start** > **Settings** > **Control Panel** > **System** to open the **System Properties** dialog box. Click the **Hardware** tab and the **Device Manager** button. Double click **Ports (COM & LPT1)**.
 The **Prolific USB-to-Serial Comm Port** (**COM3**) device should be shown (See figure 3).

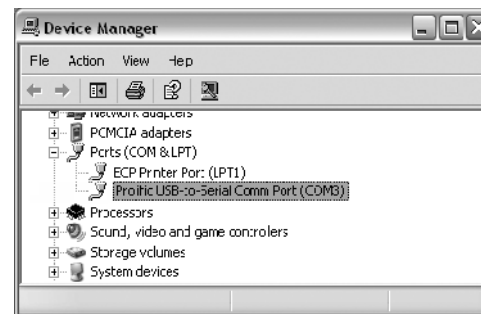


FIGURE 3

- Note:** The COM port assigned to the USB adapter varies upon the configuration of your computer hardware. Windows will check for unused COM ports and assign a free port to the new device. (COM3 is used in this example, your installation may indicate selection of a different numbered COM port)
2. To assign the device to a different COM port, double click on the device **Prolific USB-to-Serial Comm Port** to open the device properties dialog box.
 3. Click the **Port Settings** tab and the **Advanced Settings** button to open the **Advanced Settings** dialog box.
 4. Click on the **COM Port Number** pull down menu to view the available ports and their status (in use). Select a different unused port number.
- Note:** Some software programs only support up to COM4 and will not work if the device is assigned to COM5 or higher. Flicware and Flicware Pro support port numbers through COM16.
5. Once the device has been properly installed you may use the USB Adapter with your Flic™ scanner.

Installation Guide



Limited Warranty

Manufacturer warrants that the Flic scanner product will be free of defects in material and workmanship for ninety (90) days from the date of purchase. Manufacturer will, at its option, either repair, replace or refund the purchase price paid by buyer for the defective products. Such repair, replacement or refund shall be buyer's sole remedy in the event of manufacturer's breach of this limited warranty. Repaired or replaced parts or product may include new, reconditioned or remanufactured parts and equipment at manufacturer's option. All costs associated with shipment to manufacturer for warranty service, including but not limited to freight, duties, insurance and customs fees are buyer's responsibility. Manufacturer will pay the freight costs (duties, insurance, customs and any other fees are buyer's responsibility) associated with the return shipment to buyer. The method of shipment will be at manufacturer's discretion. Repair or replacement of any parts or equipment does not extend the period of warranty provided for herein. THIS LIMITED WARRANTY IS MANUFACTURER'S ONLY WARRANTY. MANUFACTURER DOES NOT GIVE WARRANTIES OF MERCHANTABILITY OR WARRANTIES OF FITNESS FOR A PARTICULAR PURPOSE. To take advantage of this warranty, buyer should contact the seller, not the manufacturer.

The warranty set forth herein does not cover and manufacturer will have no obligations hereunder if any non-conformance is caused in whole or in part by; accident, transportation, neglect, misuse, alteration, modification, or enhancement of the products or incorporation, interfacing, attachment of any feature, program, or device to the products by a person or entity other than manufacturer, failure to provide a suitable installation environment, use of the products for other than the specific purpose for which the products are designed or any use of the product not in accordance with the Operator's Guide or other misuse or abuse of the product.